

## Spiegelentnahmezange BMW

For removing the mirror control switch from door pad/armrest.

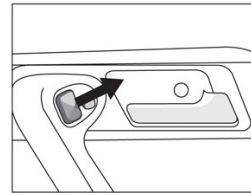


### Additional Information

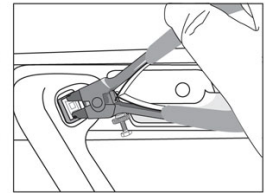
- Spiegelentnahmezange BMW
- zur Entnahme des Halte-Klips an E12/E21/E23/E24/E28/E30/E31/E32/E34/E36/E38/E39
- Weiche federgelagerte Griffe
- Zeitsparend
- Wichtiges Werkzeug

<http://lasertools.co.uk/product/5695>





Lift off mirror adjusting button.



Remove switch with tool and disconnect wiring plug.

